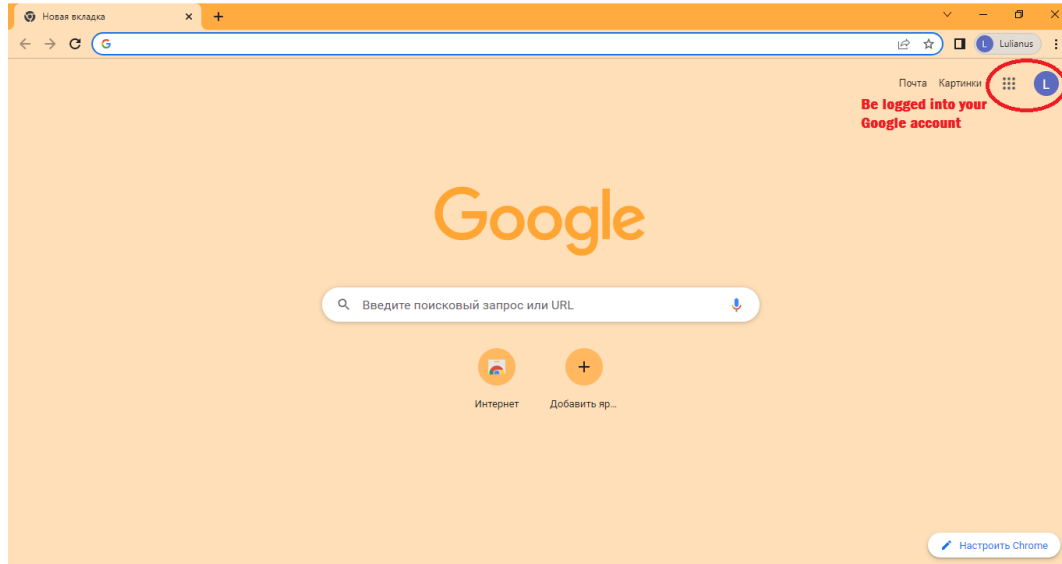


INSTRUCTION

HOW TO SEE MOBI PORTAL

General: Please log-in your google account



Step 1:

Please open each link below by one-time clicking on each of them

Waterways:

https://earth.google.com/earth/d/1_Qn5Uj9xKgdHHxpdEraQ7HSIh1x0Rned?usp=sharing

Aviation:

https://earth.google.com/earth/d/1OvELCIGXHgJm55KnG_1Mr7lmL8RNw6fA?usp=sharing

Railways:

<https://earth.google.com/earth/d/16vh4mdeSaczrOsBFJ6g2Cu5eVtOCbVzi?usp=sharing>

Motor roads:

<https://earth.google.com/earth/d/1KYW8UJd9cNhqGKFHiAvqBXSydLMTcXJt?usp=sharing>

Sustainable development and ecology:

<https://earth.google.com/earth/d/1F1m5gGct770EzWtxB3PXrfjoNewRYAEc?usp=sharing>

Cross-border points:

<https://earth.google.com/earth/d/1VtfPOcS430z6XBcCLR56a-uWSHYmhMPR?usp=sharing>

What you will see:

2. Aviation

- Airport of Nyíregyháza
- Ulfhorod Airport
- Kosice International Airport
- Maramures International Airport
- Airport Székesfehérvár
- Airport Satu Mare
- Chernivtsi airport
- Lviv Airport

What you will see:

1. Waterways

- Tisza
- Szeged, Centar, Bridge
- Hydroelectric Power Plant, Kisköre
- Tiszalök (közösségi)
- Záhony
- Existing hydrological characteristics for the function.

What you will see:

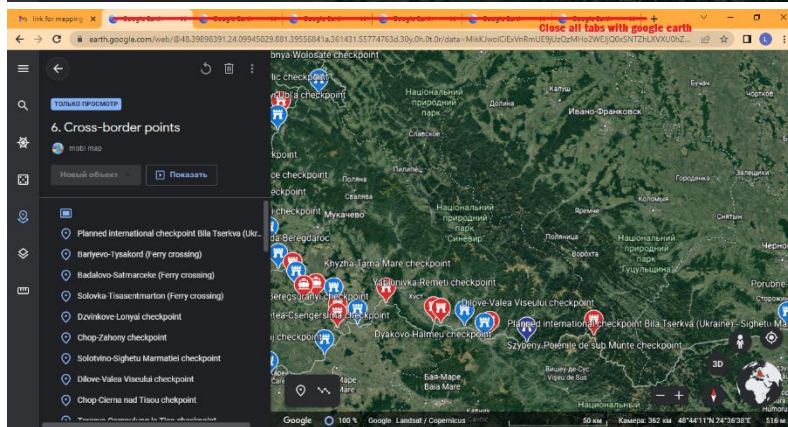
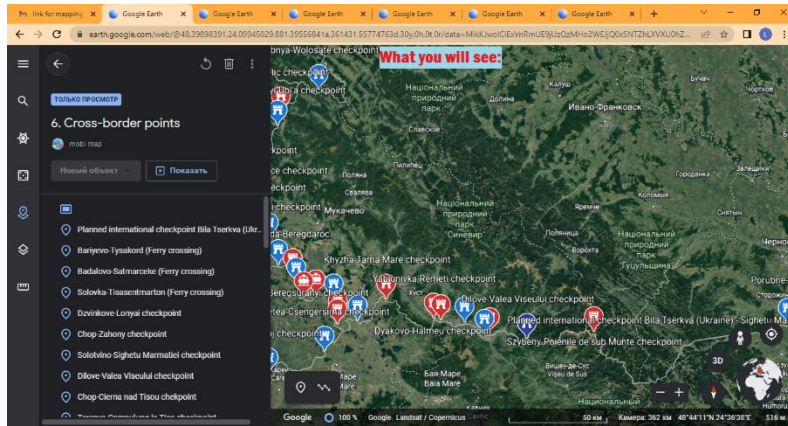
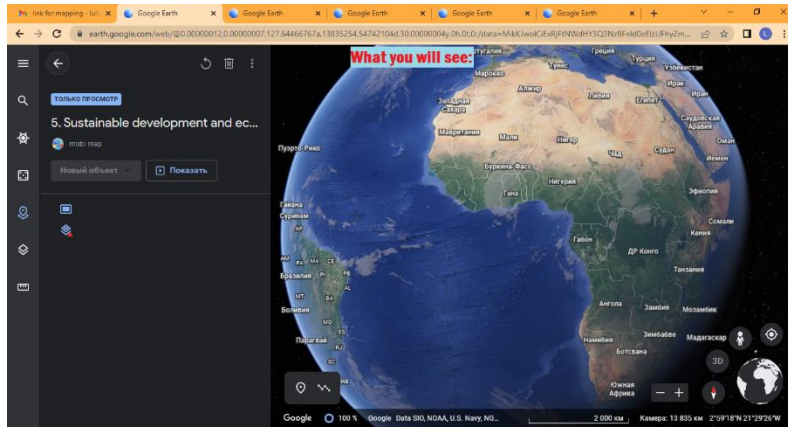
3. Railways

- Promising largest Intermodal Terminal in Europe in...
- Reconstruction of railway lines No 60 and 100C, R6...
- Upgrade of the Satu Mare - Baia Mare railway
- Improvement of the Debrecen-Nyíregyháza-Záhony...
- Baia Mare - Sighetu Marmatiei railway
- Cămpulung la Tisa - Sighetu Marmatiei - Valea Vl...
- Bătovo railway station
- Baneşova railway station
- Borzhana railway station

What you will see:

4. Motor roads

- Route M3
- M3 perspective
- B/1
- O/2
- Q/1
- B/2
- Bridge across Tisa river at Vasvárosnámény
- Preparation of a new Tisza road bridge between Za...
- Bridge across Tisa river at Sighetu Marmatiei



Step2:

Open the link below to activate english version to work with

(in case)

<https://earth.google.com/web/?hl=en>

Step 3.

Open “ projects” in the platform as indicated below and please work with option «eye» - show or hide the selected layer:

